



SYSTEX
Polymer Concrete Deck System
Contractor Brochure

Excellent for New Decks or Renovation

Systex® polymer concrete deck system leads the industry in quality and ease of use. Systex concrete topping is a three step system that provides a beautiful complement to new or existing pool decks, patios and other concrete decks. Homeowners and businesses can choose from an array of attractive colors, and get polymer durability that stands up to wear and weather for years. The Systex surface is more resistant to oil and grease stains than plain concrete. It is durable and like all Mortex products, has the ability to withstand high heat and freeze/thaw conditions. The Systex system is also perfect for renovating, giving a great look to drab or worn concrete.

- Surface cleans up easily and is more resistant to oil and grease stains than plain concrete.
- Has the durability to withstand high heat and freeze/thaw conditions.
- Texture gives a great look to otherwise ordinary concrete.
- Systex texture can be used with stencil and other decorative applications.

Coverage
Bonder: 300 to 350 ft ² per gal. (8 to 9 m ² per liter). Texture: 60 to 200 ft ² per 50lb bag (6 to 18.6 m ² per 22.68 kg). The average product usage is 132.5 ft ² Color: 125 to 150 ft ² per gal. (3.3 to 4 m ² per liter).
Contents
Bonder, Color: 5 gallon bucket (18.92 L) Texture: available in 50 lb. (22.67 kg) bag Tan or Grey
Measurements
Bonder, Color: 12" dia. x 15" (.31 m dia. x .38 m) Texture: 42" x 36" x 44" (1.07 m x .91 m x 1.1 m)
Weight
Bond: 40 lbs (18.1 kg) Texture: 50 lbs (22.7) Color: 60 lbs (27.2 kg)
Shipping Info
Freight truck, ocean or air

Instructions

Necessary Tools

- Hopper Gun
- Air Compressor
- Square Blade Mixing Paddle
- ½” Heavy Duty Drill
- 5-Gallon buckets
- Several 9” x ¾” nap rollers
- Heavy Duty paint rolling handle
- Sponges
- Steel Finishing trowels
- Paint Brushes for detailing

Optional Tools

- Mortex Dash Brush
- V-Shaped Foam Roller

Coverage

- Step 1 Bonder - 300 ft² minimum (30 m²) per gal. (8 to 9m² per liter). 1600 ft² per bucket
Step 2 Texture - 60 ft² minimum per 50 lb bag (6 to 7.5m² per 22.68 kg). 132 average ft² per bag
Step 3 Color - 125 to 150ft² per gal. (3.3 to 4m² per liter). 600 ft² per bucket

Step 1 - Instructions For Bond Application

This product provides a bond between the concrete surface and the polymer texture.

Do not mix the bonding agent with either the polymer texture material (System Step 2) or the color coat (System Step 3).

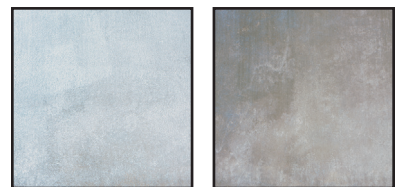
Surface Preparation

1. Apply to a clean, sound concrete surface that is at least 28 days old.
2. If you patch cracks and holes, allow for adequate drying time.
3. Sweep muriatic acid over a damp deck, followed immediately by a high-pressure wash. For the best bond adhesion, do not apply a neutralizer or any other cleaning agent after acid washing.



Application

1. Stir Bonding Agent, if necessary, but do not add water. Cover Bonding Agent container when not in use. If it dries out, it is not rewettable or usable.
2. Apply Bonding Agent when the concrete's surface temperature is above 50°F and below 90°F (10°C to 32°C). Under high heat conditions the concrete can be dampened to lower its temperature, but do not apply the Bonding Agent on wet concrete. As a general rule, the warmer the surface, the faster the drying time.
3. Use a 9” x ¾” nap roller. Dip roller directly into container to apply.
4. Spread a thin, even coat. Use a V-shaped foam roller to work the bond into crevices and joints.
5. Remove all excess Bonding Agent, especially from grooves and joints, before it dries.
6. If a spot is missed, it can be filled in even after the total area is dry.
7. When the Bonding Agent is wet, it is a white color. When dry, it becomes clear.
8. The Bonding Agent must dry before it gets rained on.
9. You have up to 48 hours to continue on with System Step 2.
10. Clean rollers with water. To make it easier to start and stop, keep rollers wet until ready for cleanup.



Wet

Dry

Step 2 - Instructions For Texture Application

This product is mixed with water, applied on top of the bonding agent and is troweled to result in a textured surface.

Do not mix the polymer texture with the bonding agent (System Step 1) or color coat (System Step 3).

Surface Preparation

1. Apply this product only after the Bonding Agent (Step 1) has been applied, and has dried clear.
2. You must mask all adjoining areas to prevent damage and clean-up problems.
3. If there is any dirt or other material on the deck, hose it off. Do not power wash.

Mixing

1. In a clean, 5 gal. bucket, pour one 50 lb bag (22.68 kg) of Polymer Texture.
2. Add 3/4gal. (2.8 L) of water and mix using a heavy-duty drill motor and a square-blade mixing paddle. You may have to add a small amount of water to get smooth consistency.
3. Allow to stand for two minutes. Although the material will have appeared to set up, it is still fluid. Stir it again without adding water.



Application

1. Prepare a clean, texturing-type hopper gun. Set the 3/8" orifice and adjust the air to 17 psi.
2. Add a cup of water at a time to the bucket of Polymer Texture and stir until it is the consistency of heavy batter.
3. Wet the hopper, fill it with the Polymer Texture and begin spraying. Full coverage is not necessary, just a sufficient amount to produce an even "knockdown" pattern when troweled. (If you have experience applying Mortex Keystone Kool Deck, you can also use a dash brush to apply the Polymer Texture.)



Troweling

1. Use a 14" round-ended trowel. Have a wet sponge or rag with you at all times to wipe off excess Polymer Texture material as you trowel.
2. Start to trowel as the water glaze leaves the material. If you wait too long before troweling, it will be difficult to give the surface a smooth finish.
3. Establish a nice, even texture. Do not hard finish the surface like normal concrete. Simply establish the flats, then quit.
4. Clean up tools with water and a wire brush.



Step 3 - Instructions For Color Application

This product is applied on top of the polymer texture to add color. Its polymer chemistry adds chemical and moisture protection to the surface.

Do not mix the polymer color coat with the bonding agent (Systex Step 1) or texture (Step 2).

Application

1. The Texture must be almost but not completely dry before applying the Color Coat. The surface should begin to have a splotchy, white and gray appearance. Best results occur when the Texture and Color Coat dry at the same time.
2. Stir the Color Coat well. Do not dilute the Color Coat material with water.
3. Dip a 9" x 3/4" nap roller directly into the bucket and "paint" the surface with overlapping strokes, being careful to get the material deep into the Texture. Use a V-shaped foam roller to work the coating into crevices and joints.
4. The warmer the temperature, the faster the drying time.
5. Clean rollers with water.
6. Keep foot traffic to a minimum for three days and do not place furniture on the deck for seven days.

The manufacturer offers this product and Information in good faith, but without guarantee either expressed or implied, as conditions and methods of use of our product are beyond our control.

Systemex® Polymer Topping for Renovation

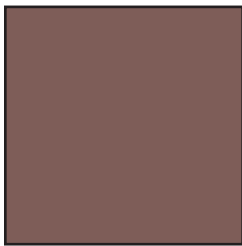
Systemex topping is also a perfect answer to the growing demand for concrete and pool deck renovation. With its ease of use, array of attractive colors and durability, Systemex provides a quick, easy and permanent fix for old, worn or deteriorated concrete.



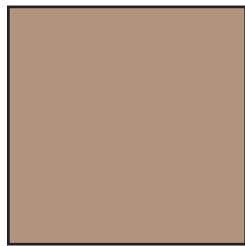
Before

After

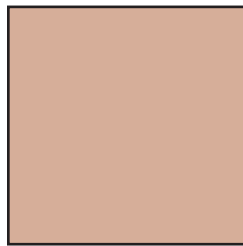
Systemex® Colors



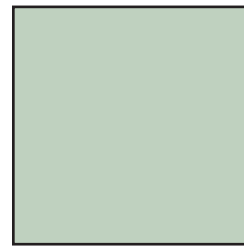
Auburn



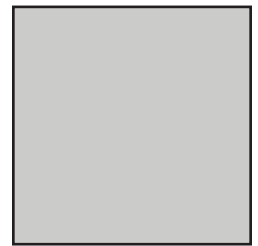
Taupe



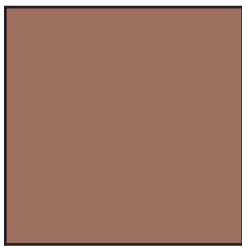
Peach



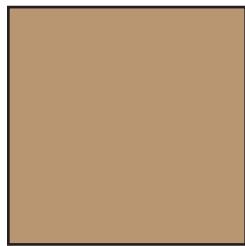
Aqua



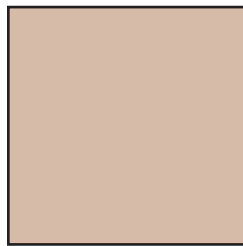
Grey



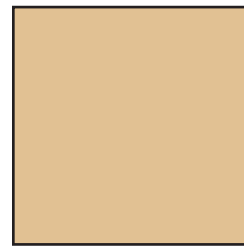
Clay



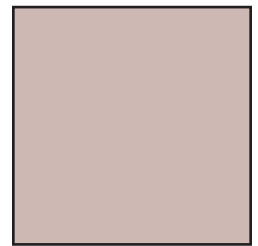
Malt



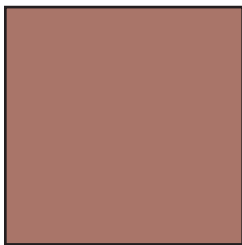
Almond



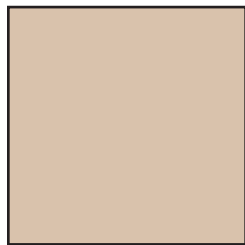
Gold



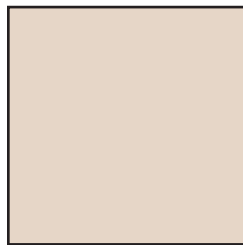
Rose



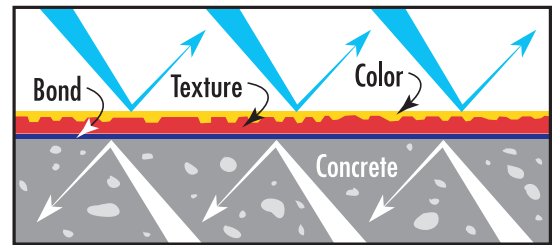
Rustic



Tan



Ivory



All colors shown are approximate

Leaders in innovation for over 40 years

Mortex Manufacturing Co., Inc.
1818 W. Price Street
Tucson, AZ 85705-2217
USA

Toll-Free: 800.338.3225
Phone: 520.887.2631
Fax: 520.293.8884

www.mortex.com



For over 40 years, Mortex™ has been the contractor's choice for innovative and superior quality products. In 1962, Mortex revolutionized the swimming pool industry with the introduction of our Keystone Kool Deck product, that literally changed the face of swimming pool decks forever. Since then, Mortex has continued to set the industry standards for product innovation, quality and customer service.

Mortex, Kool Deck, Keystone Kool Deck and Designer Color Collection are trademarks or registered trademarks of Mortex Manufacturing Co., Inc.