



## Channel Rite: Versatile Drainage

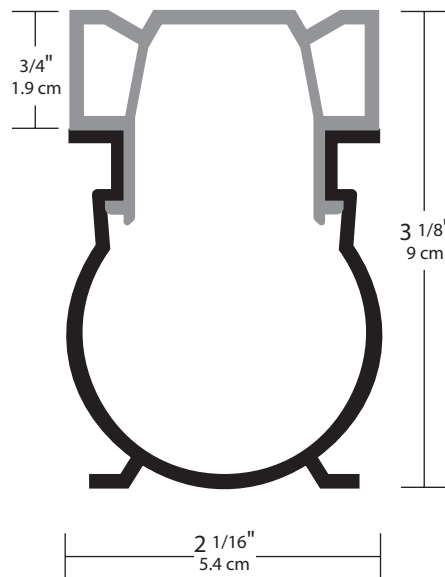
### Removable Top and 1 1/2 Pipe Compatibility

Mortex has once again responded to the industry's needs with Channel Rite. It is a new two piece, linear, non-directional water channeling system. Due to its design and heavy wall construction, warping and bowing found in other drain is greatly reduced. It is multi-functional, serving as a deck drain, a full expansion/contraction joint, and a screed for the concrete finisher.

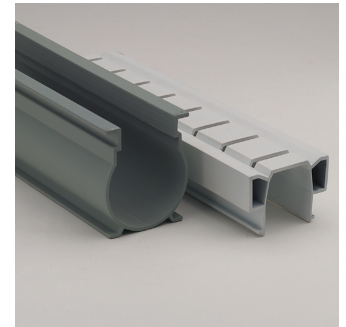
Channel Rite's full two inch top provides greater water flow from the deck surface, and it's height allows for concrete shrinkage and proper placement despite the many different field installation applications.

Regardless of what you are looking for in a water drainage system, this drain provides the solution to your needs.

- Convenient and versatile removable top
- Easily coupled with 1 1/2 inch PVC pipe
- Can be placed flush against wall or previous pour
- Linear bottom feet provide stabilization
- Packaged with two layers of protective tape
- Large internal dimensions for generous flow of water



### Two Pieces of Mind



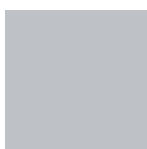
Channel Rite combines the functionality of a full flow, linear drainage system with the convenience of a separate, replaceable top.

The upper portion of Channel Rite securely locks in to place and will not separate due to seasonal changes and environmental conditions.

In addition to providing an easy internal cleaning solution, the removable top also allows for simple color changes and effortless replacement of damaged sections.



Charcoal



Grey



White



Tan



Marble \*

All colors shown are approximate.