

Control Joint & Expansion Base Instructions



Necessary Tools

- Miter Saw or Hack Saw

Optional Tools

- Hammer
- Wooden Stakes

Coverage

Control Joint: 396 lineal ft (120.7 m)

Expansion Base: 432 lineal ft (131.67 m) per carton

Control Joint

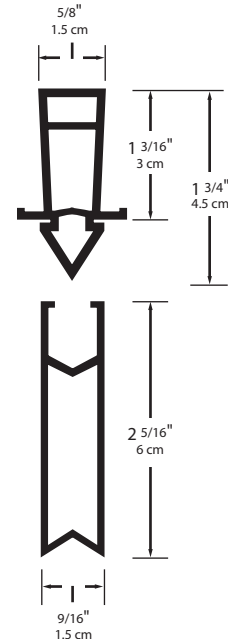
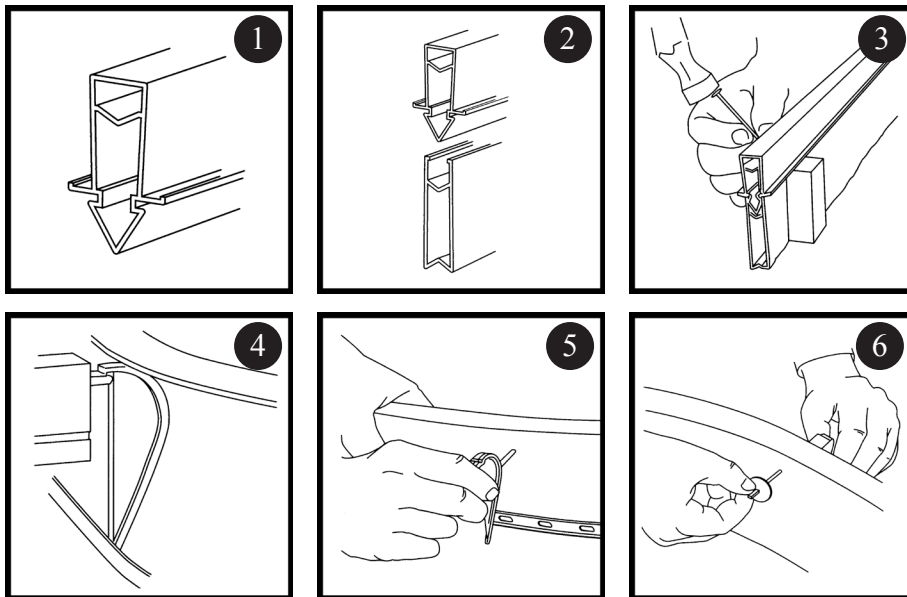
1. Where only contractual crack control is desired, precut the Control Joint to the desired length. Position the Control Joint in the fresh concrete either just before or after tamping. Score along both edges with an edging tool.

Control Joint with Expansion Base

2. Good concrete practices necessitate the periodic use of full expansion as well as contractual joints. This need is fulfilled by simply snapping the Mortex Expansion Base to the bottom of the Control Joint. This method also affords an excellent joint when the concrete pour is to be stopped and continued later.
3. When the complete unit is used, prestaking as shown is advisable.

Control Joint with Edge Caps

4. The perfect edge finish for cantilever decks is made possible with the Mortex Nose, Flair, or French Cap which is locked into the form before the pour.
5. Align Cap spear at form and push spear into form. Turn cap sideways to clear the form's cove strip and then reposition the cap against the form band.
6. Slide the locking button onto the cap's spear and push securely into place. When the concrete has finished it's initial set, twist the button to break the cap free from the form.



The manufacturer offers this product and Information in good faith, but without guarantee either expressed or implied, as conditions and methods of use of our product are beyond our control.